

TEAM CRUISE CRAFT 'FIRST TIMERS' HOOKED ON PREMIER EVENT



The Boyne-Tannum Hook-Up was another outstanding event in 2011 and it was great to be able to welcome a number of Team CruiseCraft 'first timers' to this tournament - well, it's actually more of a fantastic get-together that also happens to include a fishing competition.

Unsure as to whether or not we had a good time? Just have a look at the smiles on the faces above - that's one of the first timers, Brendan Limburg immediately above with a very solid red; another first timer beside him, Ian Willis with another quality red and a cod; TCC stalwart Richard Love is holding an impressive brace of coral trout and his regular deckie, Mick Westaway finds plenty to smile about with a red throat emperor and a trout.

Brett Seng and Boyne-Tannum first timer, Steve Russell are in the middle photo aboard David Green's boat which also had the pleasure of accommodating yet another person making his first Boyne-Tannum trip, Mal McDougall. The third photo shows yet another BT first timer, Graham Green who made the trip up from Grafton worthwhile by nailing a wonderful spangled emperor as well as a trophy red. Beside him stands one of Australia's most gifted water color artists, Rod Clark with a trout and a spangled emperor and yes folks, 'Clarkey' also was making his first trip.

Chris Barry from Kedron (Brisbane) was another first timer (although he's pretty well known in the Ausfish fishing forum circles). Fortunately, he managed to get close relative, Wayne Barry to make the trip up from Geelong. Among other species, they managed to haul in an impressive gold spot cod and an equally impressive trout. You can check them out on the Team CruiseCraft web site under the Events section. Chris summed it up pretty well in an email to Team CruiseCraft after the event: "No prize fish, but we both had a ball at our first Hook-Up event. We were busted off by what had to be great fish and enjoyed every moment. 80 lb is just under-gunned to these mystery bruisers and freight trains."

The CruiseCraft factory and Gladstone Marine again teamed up with Yamaha to provide the prize boat - a CruiseCraft Explorer 530 powered by a Yamaha 115hp four stroke outboard, both carried on a CruiseCraft trailer and with all safety gear and registration. That's tournament official Darryl Branthwaite pictured below (in the 'salmon' coloured shirt below because Gladstone blokes don't wear 'pink'), interviewing Kevin Nichols from CruiseCraft about the prize boat. The next photo shows Brett and Lisa Emmett with their youngsters, Charlie and Jacko. As very popular locals, they were totally awestruck when they won the prize boat. The competition was based on a lucky draw of tournament entrants.

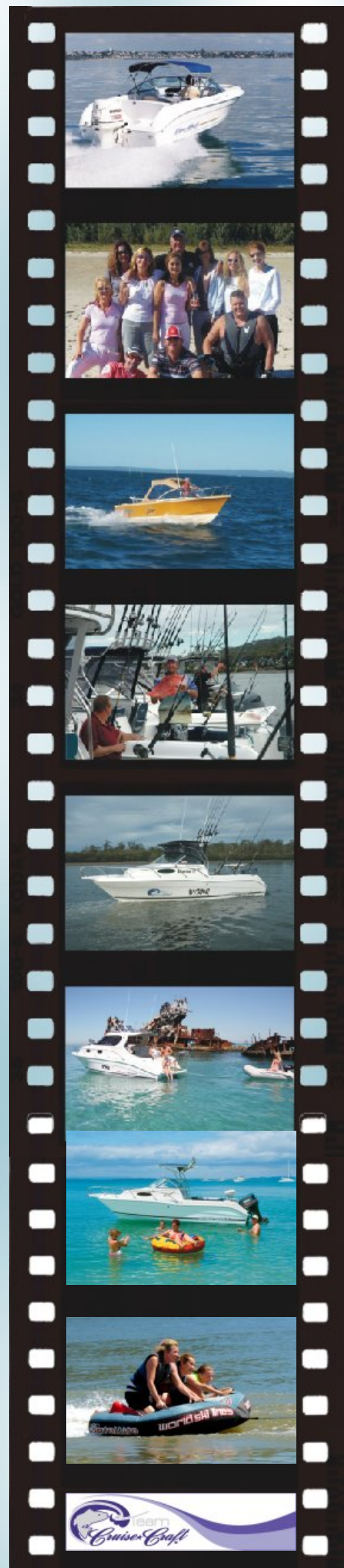


SHOW ME THE LOVE - GIVE ME A FULL BODY MAKEOVER

Who doesn't love a good scrub and tub? Well, don't think that your CruiseCraft is any different. In conjunction with Wynnum Marine located in Brisbane's bayside, CruiseCraft is now offering a suite of detailing services that will see your boat lavished with the same restorative treatment as many people apply to their cars.

The CruiseCraft make-over includes an acid wash, a full buff and polish treatment that will have your CruiseCraft looking the very best it can for its age since leaving the factory. The full detail can be packaged up with any repairs needed to the stainless steel fittings or touch-up work needed on the gelcoat.

Prices for detailing including the acid wash, buff and polish are \$550 for CruiseCrafts up to 5 metres; \$700 for vessels from 5.1 to 6 metres, and \$850 for those 6.1 metres to 7 metres. And if your boat has been involved in a mishap, the CruiseCraft factory is authorised to undertake full repairs in relation to insurance claims.



OUTSIDER 595 WINS BY A VERY WIDE MARGIN

CruiseCraft has taken the winning features of its industry-leading Outsider hull back to the drawing board, improved on them even further and come away with a totally new gem the Outsider 595.

Boasting that same style of ultra-wide helm which has drawn universal acclaim since its release on the Explorer 530, the latest addition to the range pushes the boundaries of roominess even wider apart.

Providing the perfect blend of family cruising and offshore fishing performance, the Outsider 595 has a full walk-around with a hatch seat incorporated into the cabin roof.



The floor is a fully moulded one piece fibreglass design with a removable clip-out carpet topsides. It's easy on the feet and super easy to maintain. The new look dash is expansive enough to carry the full range of engine monitoring instruments as well as high end marine electronics for navigation and seabed imaging. The underfloor storage tank doubles as a generous storage bin on non-fishing days.

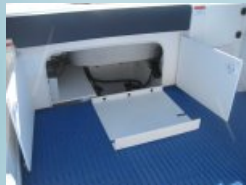
There is a new style of optional stainless steel targa and bimini, a sliding lockable cabin door (optional) and a full width removable rear lounge which can be quickly folded away when not required. The Outsider 595 is rated to take 175hp, but the ultra-efficient hull means it can still deliver excellent performance with a 135 hp outboard.

SPECIAL EDITION EXPLORER REEL GOOD THING

CruiseCraft has taken the filleting knife to its Explorer range and sliced away some luxury fittings, replacing them instead with features designed specifically to assist fishers. Good-bye permanent carpet, good-bye rear lounge seat; and good-bye stainless steel seat frames and instead it's hello to moulded fibreglass seat boxes, hello to doors accessing the storage area beneath the outboard well; hello to a storage tray and let's also tick the box for RopeLine plastic flooring to make cleaning a breeze. (Mind you, you still can have the rear lounge, the stainless seat frames and a clip-in carpet as options).



Packaged in conjunction with four targa and bimini options including a folding version to assist with garage height clearance, the Special Edition series will be offered across the Explorer 530, 575 and 625 models.



CRUISECREFTS TAKE ON THE MARLIN

Regular readers of this bulletin would know that CruiseCraft boats have fast become Australia's most affordable game fishing boats. And here's a trio of billfish to prove the point. Matt Skinner from Cronulla, whose brother-in-law owns a marine dealership, is pictured here reviving one of a couple of marlin he and brother Brett nailed from their Outsider 625 Reel Time. They were 35 miles offshore from Port Stephens - an area they try to hit as often as possible from January through to May.

The middle shot is of CruiseCraft Explorer 600 owner, Jay Furniss (known as Kid Cougar on the TCC web site because one of his pets as a youngster was a mountain lion). Here Jay is giving a sailfish a hug proving yet again that he is



frightened of no animal on earth. And the third shot is of Daniel Smith from Queensland who won the CruiseCraft Explorer 530 from the Brisbane Boat Show. Earlier this year he towed his CruiseCraft prize down to the Luhrs fishing tournament at Port Stephens and managed to nail five marlin over four days including two stripies, a black and two blues.

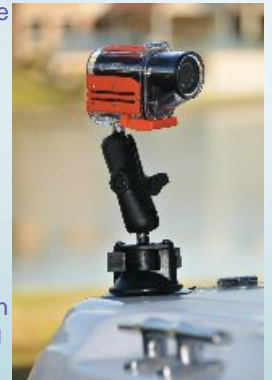
The blue which David managed to catch with his crew, Wade Micke and Connor Lynch tipped the scales at 143kg, just shy of the winning 157 kg specimen weighed in. However they did manage to take out the prestigious Peter Goadby award.

BOAT CAM - WE'RE GOING TO THE MOVIES

Here's the best idea since the in-car movie camera was pioneered by Australian motorsport - it's the CruiseCraft Contour Boat Cam. No wait, it's better than car-cam because you can mount this camera anywhere on your boat from windscreen bow rails to any smooth fibreglass surface and it will give you outstanding, high definition movies.

The camera at right has the optional orange waterproof casing that allows you to shoot underwater just like on the television programs *Fishing Australia* and *The Ultimate Fishing Show* with Matt Watson, where it also is used.

Over the last couple of months, we've been investigating a variety of cameras and a variety of software programs for managing the movies. The clear winner in the camera stakes is the CruiseCraft Contour Boat cam which is available through CruiseCraft. The camera is an ultra lightweight unit weighing just 166 grams and is only 95mm long. It has a brilliantly secure TRail mounting system along the side grooves which interlock with more than 20 mounting accessories. It delivers true high definition movies and it's a snap to use.



The three photos immediately below are extracted from movie footage which we shot with the CruiseCraft Contour Boat Cam. Note in the middle photo how everything is in perfect focus - from the skipper at the helm, to the bait board.

It's an exceptionally broad field of vision ... 135 degrees and the quality is outstanding - up to 1920 x 1080 HD at 30 frames per second. There are optional resolutions to extend the shooting time on Micro SD cards (it can manage up to 32 Gig which would give eight hours recording in HD).

Meantime here's the bottom line the camera is just \$299 including a 2 Gig memory card; the waterproof housing is \$69.95; a windscreen rail mount is \$49.95 and the Ram suction cap mount as pictured above is \$69.95.

That's a perfect package, but you also can have a GPS version of the camera with Bluetooth so you can use your iPhone as a viewfinder, for \$499. Phone us now to secure your CruiseCraft Contour Boat Cam or for more info.

